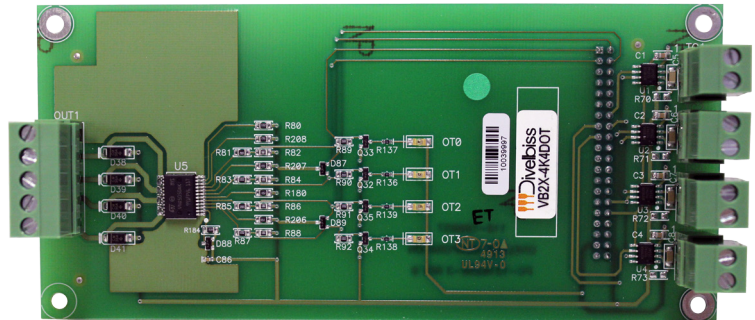


Versatile Base Overview:

The Versatile Base 2000 (VB-2XXX) Series solves today's tough control issues with all the advanced features needed in one product family. The VB-2000 Series includes multiple models on Programmable Logic Controllers, Digital I/O, Analog I/O and VersaCloud M2M Expansion capabilities including thermocouple inputs, Cellular, GPS and an HMI Interface (LCD Display and Keypad) to allow operators to set parameters and identify alarms and faults. With an operating temperature of -40°C to 80°C, the VB-2000 Series is able to control in almost any temperature environment.

Versatile Base Plug-in I/O Expanders - VB-2000 Series

- ▶ Operating Temperature -40° to 80° C
- ▶ Thermocouple Inputs
- ▶ Digital Outputs / PWM Output Capability
- ▶ Plug-in / Board Mounted



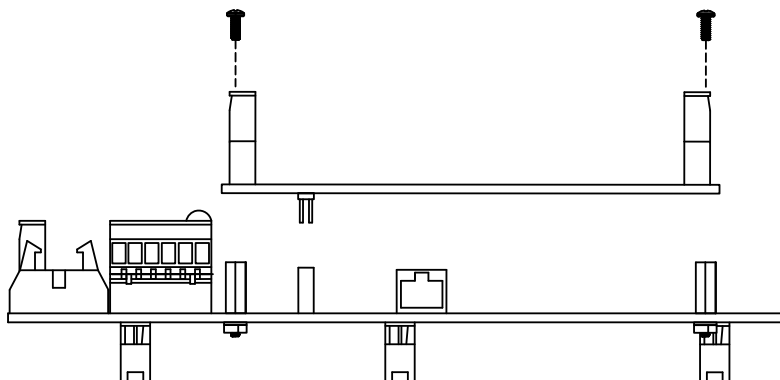
VB2X-4K4DOT Expander Top View

VB-2000 Series Plug-in Digital / Analog I/O Expanders

The VB-2000 Series Controllers features may be expanded by installing plug-in expanders (VB2X-XXXX). These plug expanders provide special purpose analog inputs such as thermocouples or additional digital I/O. The expanders stack-mount and plug directly into the VB-2000 Series controller using its EXP port. Once installed, the expander may be added to the ladder diagram project and then it may be utilized in the ladder diagram.

VB2X-XXXX Series Analog / Digital I/O Plug-in Expanders Specifications / Features		
FEATURES	MODELS	
Digital I/O	VB2X-4K	VB2X-4K4DOT
Digital Outputs, 8-32VDC, PWM or On/Off	None	Qty 4, Sourcing, Groups of 4
Digital Output / PWM Frequency	None	1.0 Hz to 1.0 KHz
Analog I/O		
Thermocouple Inputs	Qty 4, Type K*	Qty 4, Type K*
Other		
Style / Mounting	Plug-in / Stack- Mount	Plug-in / Stack- Mount
Dimensions	6.4"L x 2.9" W x 1.35"H	6.4"L x 2.9" W x 1.35"H
Operating Temperature	-40°C to +80°C	-40°C to +80°C
* Other Thermocouple types available upon request. Contact Divebiss Corporation.		

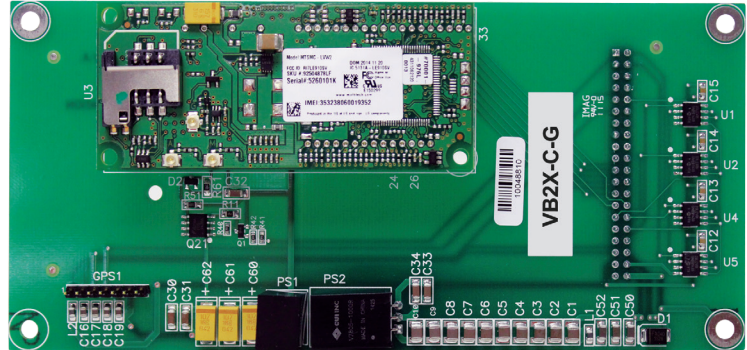
Mounting:



Versatile Base Plug-in VersaCloud M2M Expanders

NOW
VersaCloud M2M
Enabled

- ▶ Operating Temperature -40° to 80° C
- ▶ VersaCloud Cellular Data Modem^{1,2}
- ▶ GPS Option
- ▶ Plug-in / Board Mounted
- ▶ Reduced Data Usage (Low Overhead Protocol)



VB-2000 Series Plug-in VersaCloud M2M Expanders

The VB-2000 Series Controller features may be expanded by installing plug-in expanders (VB2X-XXXX). These plug expanders provide special communications options using VersaCloud M2M including Cellular connectivity^{1,2} and GPS. The expanders stack-mount and plug directly into the VB-2000 Series controller using its EXP port. Once installed, the expander may be added to the ladder diagram project and then utilized in the ladder diagram.

VersaCloud M2M communications features on the plug-in expanders such as Cellular and GPS can be combined with communications features on the VB-2XXX Controllers such as Ethernet and Wi-Fi to provide a versatile and powerful remote monitoring, control and data collection solution.

A Versatile Base (VB-2000 Series) controller including plug-in expansion options communicates to the VersaCloud M2M Cloud via Ethernet, Cellular^{1,2}, or Wi-Fi² (model dependent) providing the ability to monitor equipment and process remotely, control equipment and adjust process parameters remotely and to collect operational and status information for data analysis and reporting.

VersaCloud portals are customizable and allow for access to remote equipment or processes from nearly any internet enabled device such as a computer, tablet or smartphone.

VB2X-XXXX Series VersaCloud Connectivity Plug-in Expanders Specifications / Features			
FEATURES	MODELS		
	VB2X-C-G	VB2X-X-G	VB2X-C-X
Cellular Data Modem ^{1,2}	■		■
GPS (Global Positioning)	■	■	
Style / Mounting	Plug-in / Stack- Mount	Plug-in / Stack- Mount	Plug-in / Stack- Mount
Dimensions	6.35"L x 2.95" W x .6"H	6.35"L x 2.95" W x .6"H	6.35"L x 2.95" W x .6"H
Operating Temperature	-40°C to +80°C	-40°C to +80°C	-40°C to +80°C

1: Cellular data provided by VersaCloud by Divebiss

2: VersaCloud features require VersaCloud M2M Package with Cloud Portal. Additional charges apply to connected devices.