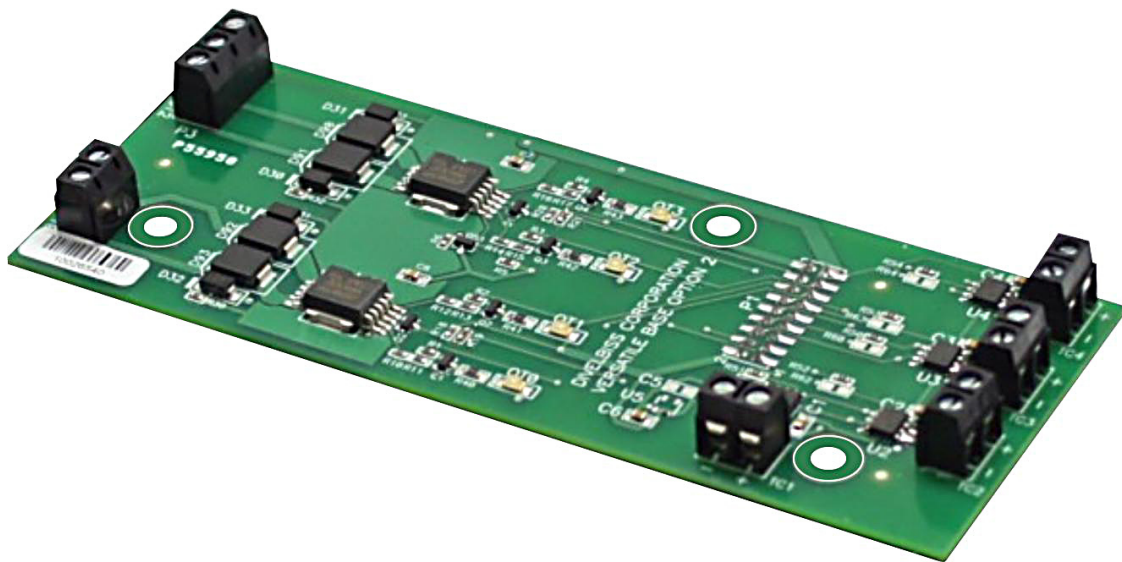


VERSATILE BASE SERIES

VBEX-TCDOT EXPANDER USER MANUAL

For Models:

VBEX-4K4DOT



Revision: 0

Manual Contents

Getting Started

| | |
|--|---|
| How to Use this Manual | 3 |
| Install the VBEX-TCDOT Expander on the VB-1000 Controller..... | 4 |
| Configuring the VBEX-TCDOT in EZ LADDER Toolkit..... | 5 |
| Getting to Know the VBEX-TCDOT | 7 |
| Additional Thermocouple Types..... | 7 |

VBEX-TCDOT Features

| | |
|--------------------------------|----|
| Digital Outputs..... | 9 |
| Thermocouple Inputs | 10 |
| VBEX-TCDOT Specifications..... | 11 |

WARNING!!

The VB-1000 with the VBEX-TCDOT installed, as with other programmable controllers must not be used alone in applications which could be hazardous to personnel in the event of failure of this device. Precautions must be taken by the user to provide mechanical and/or electrical safeguards external to this device. This device is **NOT APPROVED** for domestic or human medical use.

Getting Started

This section explains how to read this manual and understand the symbols and information that it contains.

To begin using your VBEX-TCDOT Expander, you will need to follow these steps:

- Install the VBEX-TCDOT on the VB-1000 Controller
- Connect the VBEX-TCDOT Digital Output Power Source
- Configure the VB-1000 Controller to use the VBEX-TCDOT in the EZ LADDER Toolkit Project Settings.

Refer to the appropriate sections of this manual for details on the above items.

How to Use this Manual

In this manual, the following conventions are used to distinguish elements of text:

| | |
|-------------------|--|
| BOLD | Denotes labeling, commands, and literal portions of syntax that must appear exactly as shown. |
| <i>italic</i> | Used for variables and placeholders that represent the type of text to be entered by the user. |
| SMALL CAPS | Used to show key sequences or actual buttons, such as OK, where the user clicks the OK button. |

In addition, the following symbols appear periodically in the left margin to call the readers attention to specific details in the text:



Warns the reader of a potential danger or hazard associated with certain actions.



Appears when the text contains a tip that is especially useful.



Indicates the text contains information to which the reader should pay particularly close attention.

All Specifications and Information Subject to Change without Notice

Install the VBEX-TCDOT Expander on the VB-1000 Controller



The VB-1000 and VBEX-TCDOT are purchased separately. Before the VBEX-TCDOT may be used, it must be installed as the expansion option on the VB-1000 controller. You will need full access to the VB-1000 top and bottom. It is recommended to disconnect and un-mount the VB-1000 prior to beginning this installation.

To Install the VBEX-TCDOT

1. Un-mount and disconnect the VB-1000 Controller
2. Using the 3 metal spacers and 3 of the screws provided, install the spacers on the VB-1000 controller in the provided expansion holes as shown in Figure 1.1. The screws will enter from the back (solder) side of the VB-1000 and the spacers will be located on the top (component) side of the VB-1000.

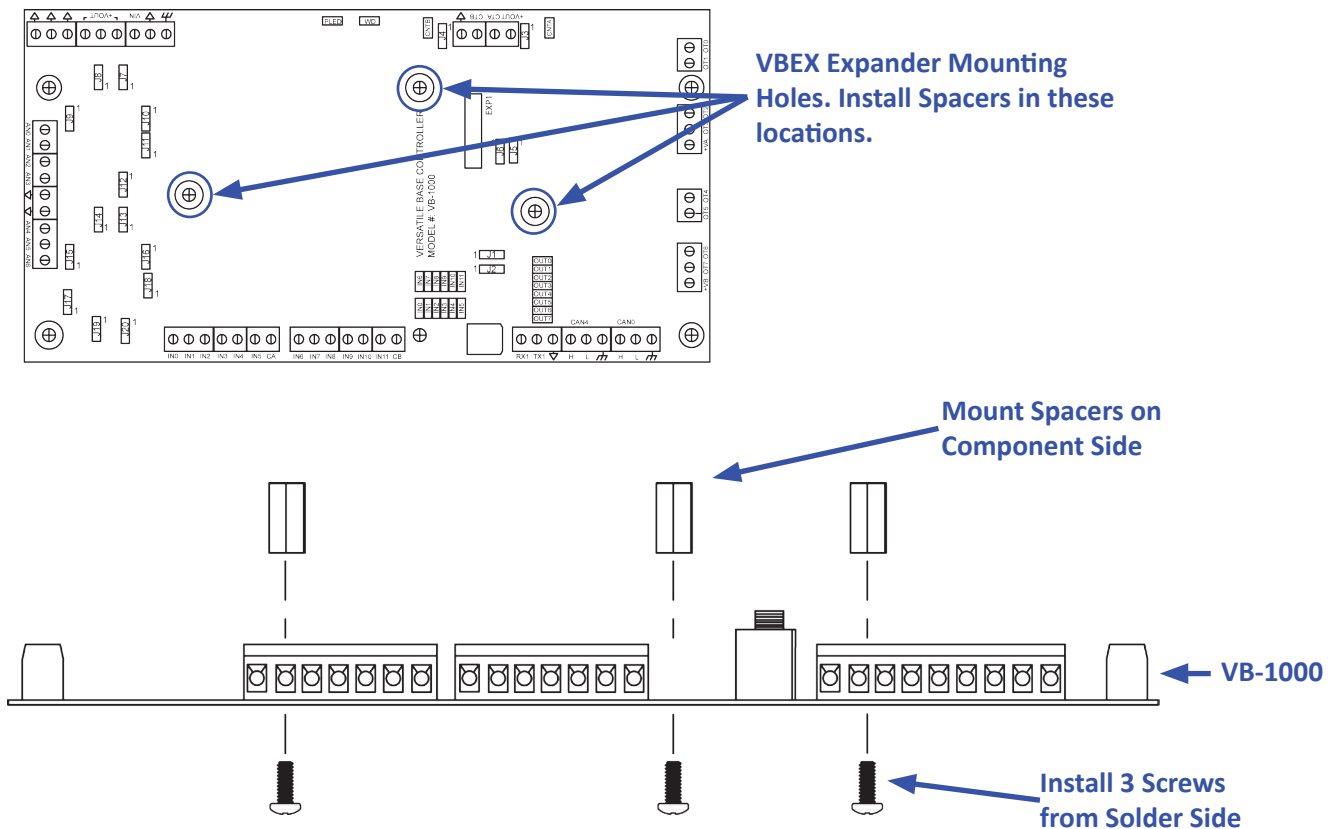


Figure 1.1 - Installation of Spacers

3. Carefully aligning the VBEX-TCDOT with the installed spacers, gently plug the VBEX-TCDOT into the EXP1 connector on the VB-1000. Ensure proper alignment on EXP1. When installed correctly, all the EXP1 pins will be plugged into the VBEX-TCDOT and the VBEX-TCDOT will be placed against the spacers and the mounting holes will align with the spacers correctly. Refer to Figure 1.2.
4. Install the remaining 3 screws provided to secure the VBEX-TCDOT to the VB-1000 controller (installed spacers).
5. The Digital Outputs of the VBEX-TCDOT requires a Power Supply for operation. Connect an 18 AWG wire from your power supply (8 - 32 VDC) to the +VA terminal of the VBEX-TCDOT. Refer to Figure 1.3.



The VBEX-TCDOT output loads must be connected to the power supply common (ground) and this common (ground) must be connected to the VB-1000 controller's Input Power common (ground) as well as all the VB-1000's Digital Outputs Power Supply Common (ground). All output loads and power supplies must share the same common (ground). Failure to use the same common may result in undesirable operation and may result in damage to the VB-1000 and the VBEX-TCDOT Expander.

Install 3 Screws to
Secure VBEX Expander

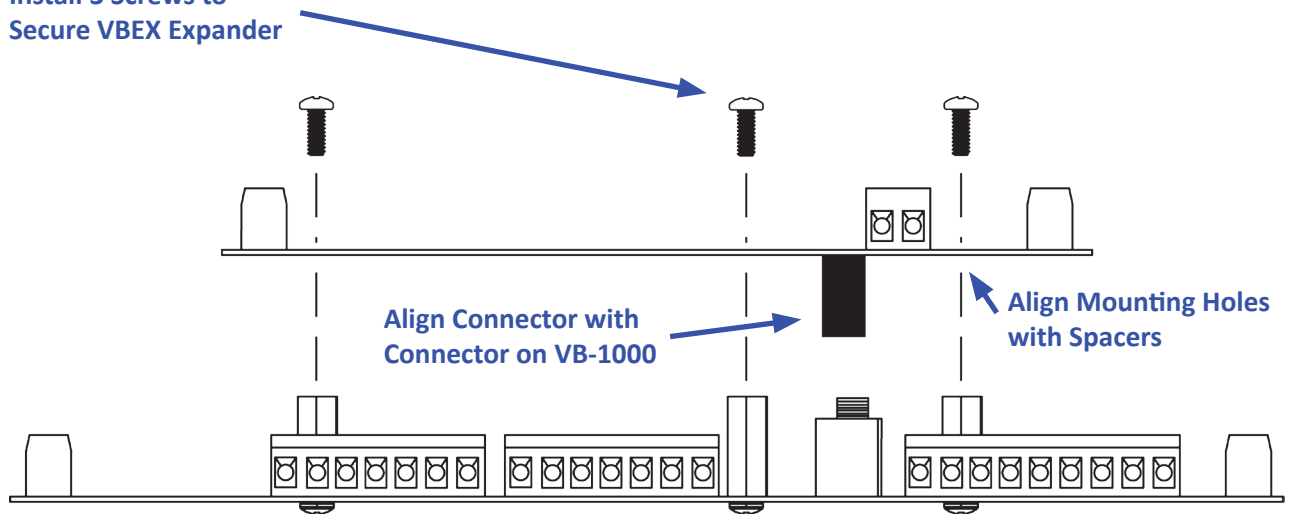


Figure 1.2 - Mounting the VBEX-TCDOT

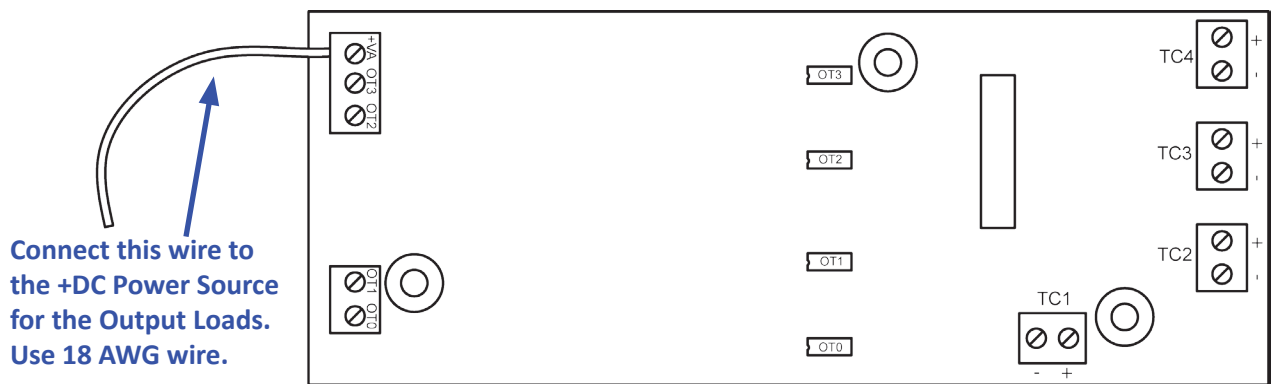


Figure 1.3 - Connect Digital Output Power Source

Configuring the VBEX-TCDOT in EZ LADDER Toolkit

It is assumed that you are familiar with the VB-1000 before installing this expansion option. Please refer to the VB-1000 User Manual for details regarding the VB-1000.

Before you can begin using features on the VBEX-TCDOT, it must be configured as an option for the VB-1000 target within the EZ LADDER Toolkit. For help with installing or using EZ LADDER, please refer to the EZ LADDER User Manual.

1. In EZ LADDER, from the File Menu at the top, click **PROJECT** then **SETTINGS**. This will open the Project Settings Window. Select **VB-1000** as the target from the choices. Refer to Figure 1.4.

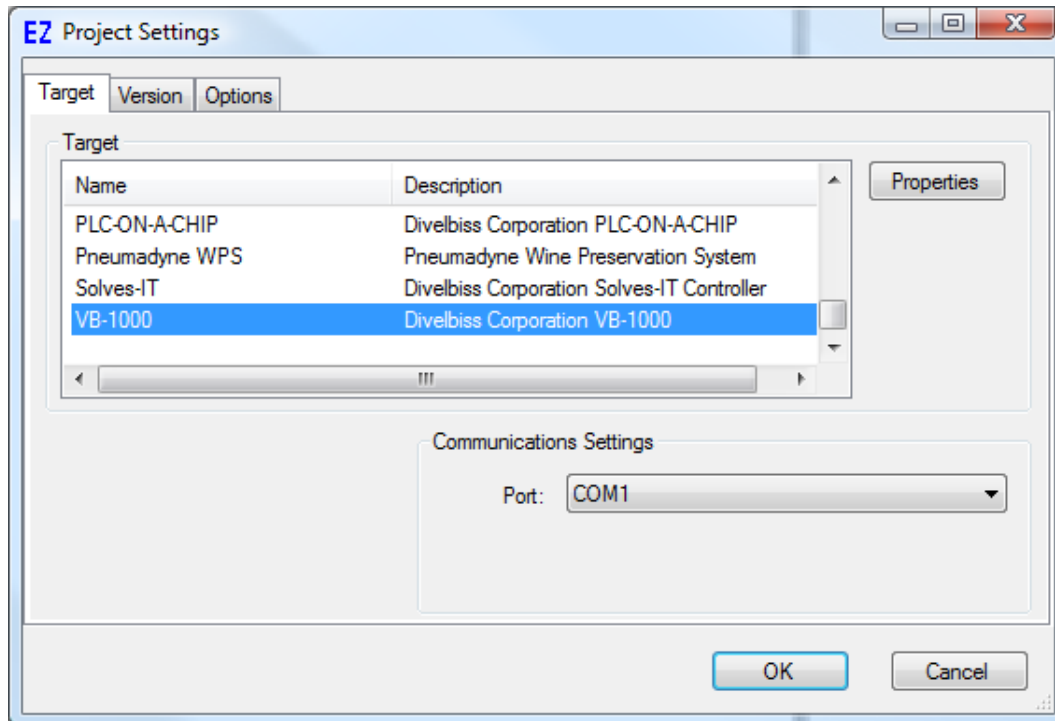


Figure 1.4 - Project Settings Window

2. Click **PROPERTIES**. This opens the VB-1000 Properties dialog.
3. Using the **OPTION BOARD** drop-down menu, select the VBEX-TCDOT as shown in Figure 1.5.
4. Click **OK** to close the VB-1000 Properties dialog and click **OK** to close and save the Project Settings. The VBEX-TCDOT is now installed as an option for the VB-1000 controller.

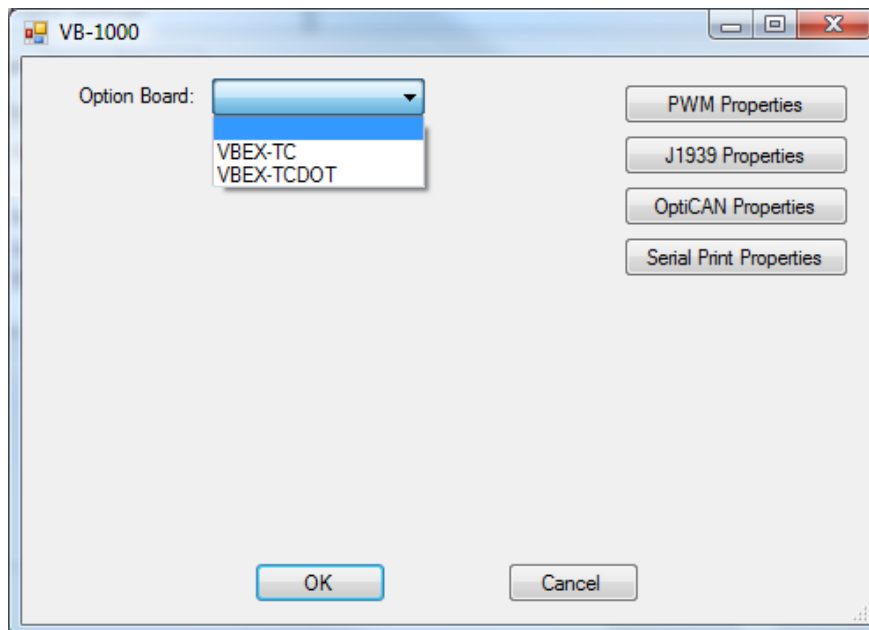


Figure 1.5 - VB-1000 Properties

Getting to Know the VBEX-TCDOT

The VBEX-TCDOT is an expander for the VB-1000 controller. The VBEX-TCDOT provides up to 4 Thermocouple inputs and 4 Digital Outputs. The following models are supported as VBEX-TCDOT expanders. See Figure 1.6.

| Model # | Description |
|---------------------|--|
| VBEX-4K4DOT: | VBEX-TCDOT expander with 4 Type K Thermocouples and 4 Sourcing Digital Outputs |

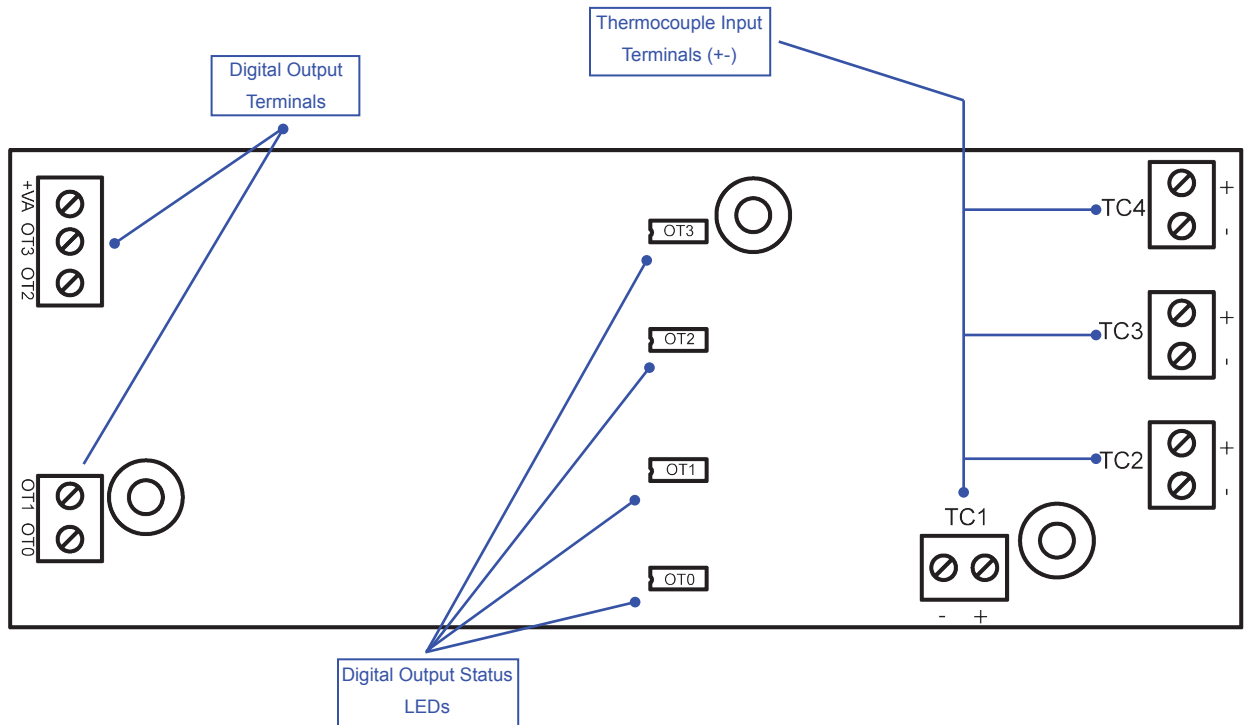


Figure 1.6 - VBEX-TCDOT Features

Additional Thermocouple Types


Other thermocouple types, (J, N, R, S) are available upon request. Please consult the factory for availability of VBEX expansion with these thermocouple types.


VBEX-TCDOT Features

This section explains the VBEX-TCDOT Expander hardware features, options and information regarding EZ LADDER Toolkit for basic operation.


Digital Outputs

The VBEX-TCDOT includes 4 on-board digital outputs. They are identified in the EZ LADDER Toolkit and this manual as DOT0 - DOT3 and these variables are automatically created when the VBEX-TCDOT is selected as the VB-1000 Expansion. These outputs are sourcing, therefore an energized output will source an output voltage equal to the controller input voltage. Refer to Figure 2.1 for typical output connections.


 An external power connection and source is required to supply power for the outputs. Power is supplied by the +VA terminal using the 18 AWG wire as shown in Figure 1.3. The +VA terminal and expander outputs allow for expander output loads to be controlled at different voltages from the controller I/O. The expander outputs will operate at any voltage from 8-32VDC.

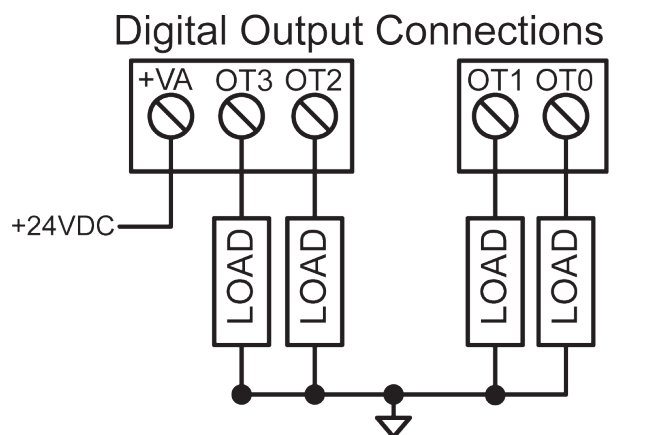
 The Expander outputs and controller outputs may be connected to different voltages, but the power supplies connected must have the same common (ground). Failure to use the same common for the expander outputs, controller outputs and controller power may cause unwanted operation and may cause damage to the VB-1000.

Each output can drive a load up to maximum current rating listed in the specifications section (resistive) and includes an automatic over-current shutdown safety. In the event an over current condition exists, the output will shut down. This shut down condition is reset when the output is turned off (set to false) in the ladder diagram.

 Each output requires a minimum load to operate correctly. Depending upon the device connected to an output, a minimum load resistor may be required. If the output is ON or true regardless of the ladder diagram program, connect a 470Ω to 1KΩ load from the output to input power common.


Each expander output will only operate as a digital output. The expander outputs do not support Pulse Width Modulation (PWM).

 To control a digital output in a ladder diagram, place and connect the appropriate coil for your needs. The DIRECT COIL and INVERTED COIL functions are used to control digital outputs in the ladder diagram. When placing the coil, verify you select the correct output address (DOT0 - DOT3) from the provided drop-down menu.



Same Load Common must be used for both the VB-1000 controller, VB-1000 Outputs and the VBEX-TCDOT Expander.

Figure 2.1 - Typical Digital Output Connections

 In addition to controlling the outputs, the status of the digital outputs may be *monitored* for an OK or Fault status. The DOT0 and DOT1 outputs Status Lines are combined (OR) and the DOT2 and DOT3 output Status Lines are combined (OR). When the VB-1000 target is configured to use the VBEX-TCDOT in EZ LADDER, 2 status variables are created automatically, identified (EXSTAT0 - EXSTAT1). These variables indicate the status of the output and may be used in the program as any boolean variable (DIRECT CONTACT or INVERTED CONTACT). A High or True condition indicates that the output is functioning properly while a Low or False condition indicates a fault condition of the output (open load or overload). This condition is only valid when the output is turned on in the ladder diagram program.

When EXSTAT0 is false, this would indicate an error on either DOT0 or DOT1. When EXSTAT1 is false, this would indicate an error on either DOT2 or DOT3.

Thermocouple Inputs



The VBEX-TCDOT provides up to 4 Thermocouple. The type and quantity of each thermocouple input is based on the actual Model Number of the Expander ordered.

| Model # | Description |
|---------------------|---|
| VBEX-4K4DOT: | VBEX-TCDOT expander with 4 Type K Thermocouples |



Each analog input is represented in the EZ LADDER Toolkit ladder diagram using (Real) variables labeled TC1 - TC4. These variables were created automatically when the VBEX-TCDOT expander was configured as the expansion option for the VB-1000 target.



Each variable (TC1- TC4) will represent the actual temperature read by the connected thermocouple in degrees Celsius. If you wish to have temperatures in degrees Fahrenheit, you must convert the values using mathematical function blocks in your ladder diagram program. Each thermocouple channel internally has all the required cold-junction compensation and linearization required.

Thermocouple Input Connections

For each of the thermocouple inputs (TC1-TC4), a + and - terminal are provided. Refer to Figure 1.6 for locations of the thermocouple input terminals and their polarity. Figure 2.2 illustrates a typical thermocouple connection.



When connecting thermocouples, connect the thermocouple wire directly to the terminals provided. When mounted in an enclosure, ensure that only thermocouple wire of the appropriate type is used for the connections between the VBEX-TCDOT thermocouple terminals and the actual enclosure entry. Failure to use the proper thermocouple wire will result in incorrect temperature readings.

Thermocouple Connections

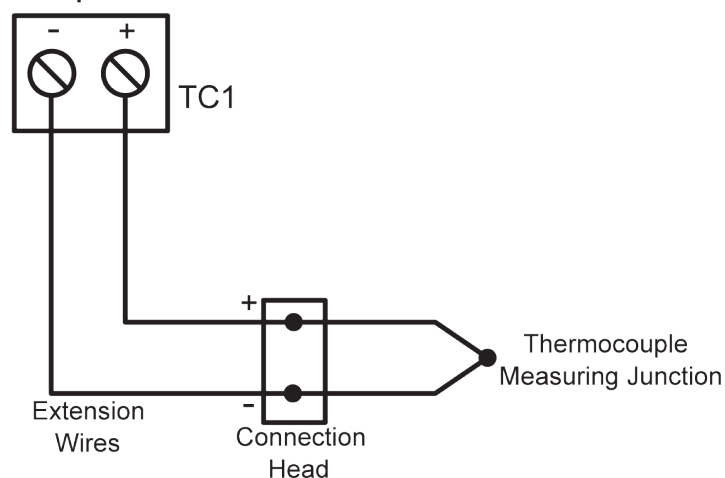


Figure 2.2 - Typical Thermocouple Input Connection



The operating temperature range of the expander may vary based on model number. The VB-1000 is rated for -40°C to +80°C, but some expanders may not operate under this full range. The controller and expander should only be installed where the temperature range of the narrowest window between the controller and the expander is sufficient.

VBEX-TCDOT Specifications

| | |
|-----------------------------|--|
| Digital I/O: | 4 Digital Outputs on-board Outputs rated 4A Max ^{SEE NOTE 1} , Over-current protected. Sourcing as Groups of 4 Outputs External Power Source Required on +VA Digital Output Status Lines, 2 total (combined in pairs) |
| Type K Thermocouple Inputs: | Qty up to 4 Measurement Range: 0°C to 1023°C ^{SEE NOTE 3} Resolution: 12 Bit, 0.25°C per bit Accuracy 0°C to +700°C: +/-5.5°C ^{SEE NOTE 2, SEE NOTE 3} Accuracy +700°C to +1023°C: +/-7.75°C ^{SEE NOTE 2, SEE NOTE 3} |
| Operating Temp: | -20°C to 80°C ^{SEE NOTE 3} |
| Dimensions: | 2.2" Wide x 5.7" Length x .6" Tall. |
| Mounting: | Installs on VB-1000 Controller, Stack Mount using #6 spacers and screws |
| Type: | Open Board |
| Storage Temperature: | -40-85°C |

NOTE 1: 4ADC Total @ up to 50 ° C Maximum per 2 Output Channels. Channels paired as DOT0 / DOT1 and DOT2 / DOT3. Total Current is sum of both paired output channels. See Figure 2.3 for maximum output current per output channel pair based on ambient temperature.

NOTE 2: Temperature Accuracy based on 25°C ambient temperature.

NOTE 3: Specifications will be changing in the near future, including better accuracy, better range and wider operating temperature. Consult factory for estimated availability.

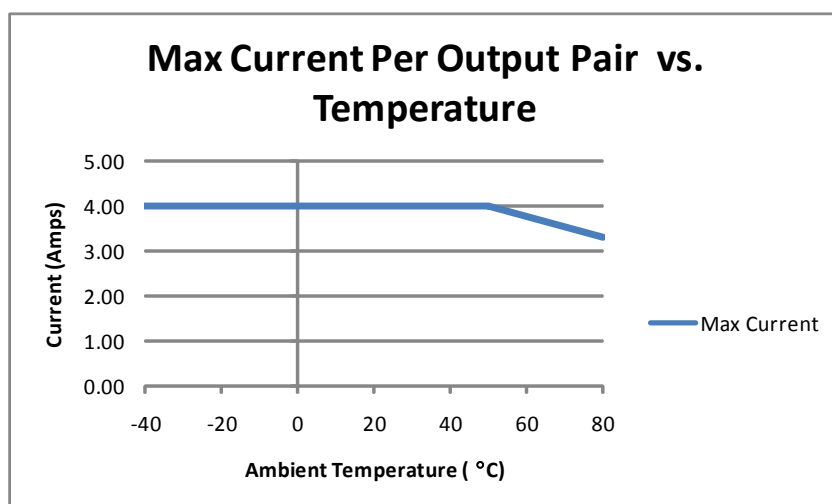


Figure 2.3 - Max Current for Outputs