

BABY BEAR BONES PLUG-IN TIMERS

DESCRIPTION

The Baby Bear Bones Timers give you the capability to add potentiometer adjustable timing functions to your Baby Bear Bones. The potentiometer can be located on the timer or mounted remote from the timer.

FEATURES

Easy to plug in to the Baby Bear Bones or its expander. Remote mounting of potentiometer capability.

SPECIFICATIONS

These timers plug into the output sockets of the Baby Bear Bones or its Expander. Each timer will occupy one (1) I/O Port. Once a timer is plugged in that port the output and input cannot be connected to the real world.

<u>Part No.</u>	<u>Range</u>	<u>Potentiometer</u>
ICM-TM-05	0.1 to 10.5 sec. ± 1.5 sec.	Local
ICM-TM-06	0.1 to 10.5 sec. ± 1.5 sec.	Remote 5.0 meg.
ICM-TM-07	0.3 to 170 sec. ± 20 sec.	Local
ICM-TM-08	0.3 to 170 sec. ± 20 sec.	Remote 5.0 meg.
ICM-TM-09	0.1 to 2.0 sec. ± 0.3 sec.	Local
ICM-TM-10	0.1 to 2.0 sec. ± 0.3 sec.	Remote 1.0 meg.


APPLICATIONS

These timers can provide the on: or off delay periods required in your program. These timers also provide operator adjustability without having to use the Intelligent Programmer.

OPERATION

The timer is a monostable timer that can be programmed to function like an on-delay or an off-delay timer. The timing function is started by programming the time coil as you would any output. To examine the timed function just program the timer contact as you would any input. For a given timer the input and output addresses must be the same.

Current Rev.01 7/7/89

		Rev.01 7/7/89
SHEET <u>1</u> OF <u>4</u>	NUMBER 7809-45	

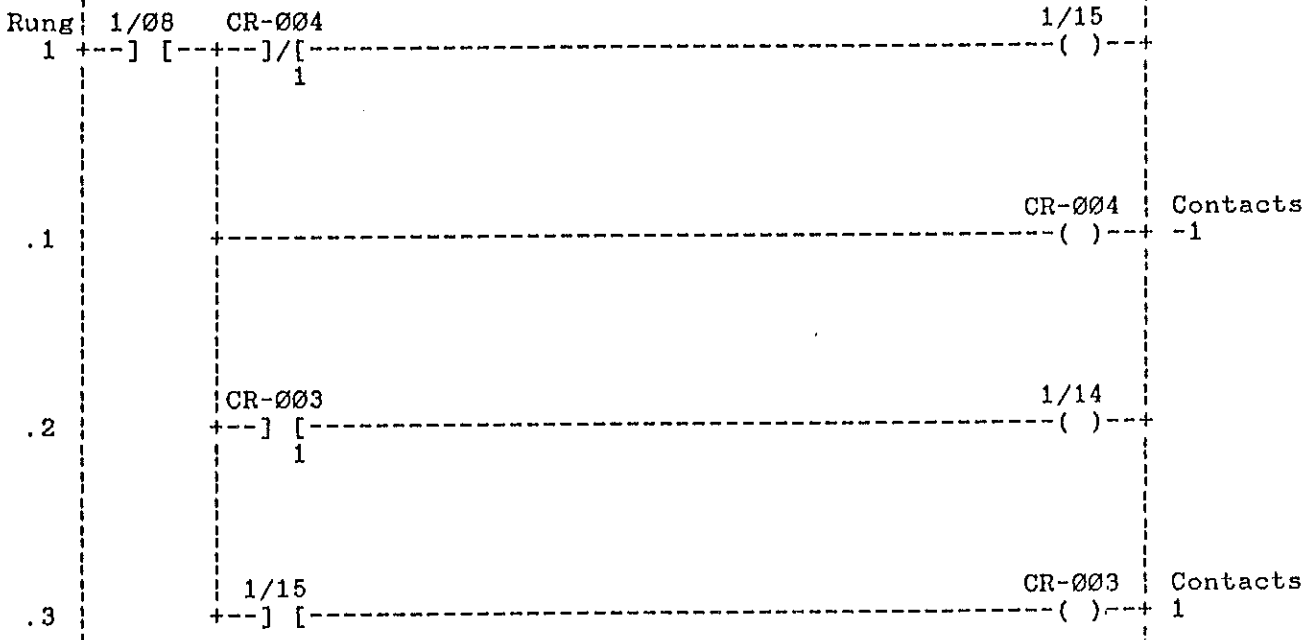
BABY BEAR BONES PLUG-IN TIMERS

Divelbiss Advanced Documentation Ladder Diagram Listing

```

{
      ON DELAY TIMER PROGRAM
}
{
  Input 1/08 and CR-004 N.C. trigger the timer coil 1/15. This
  trigger lasts for only one scan, because on the next scan the
  contact of CR-004 is opened. This pulse starts the time
  cycle. When timer 1/15 times out its' contact closes
  energizing CR-003. When CR-003 is picked up output 1/14
  turns on.
}
{
  The combination of 1/08 and 1/15 contacts are advisable since
  the N.O. contact of 1/15 will pass current in its' shelf
  state. This contact sense limitation is a result of keeping
  the timer package small enough to plug into the socket.
}

```



NOTE: The timer in this example is plugged into I/O address 1/15. When the timer is inserted both the output and input are dedicated to the timer.

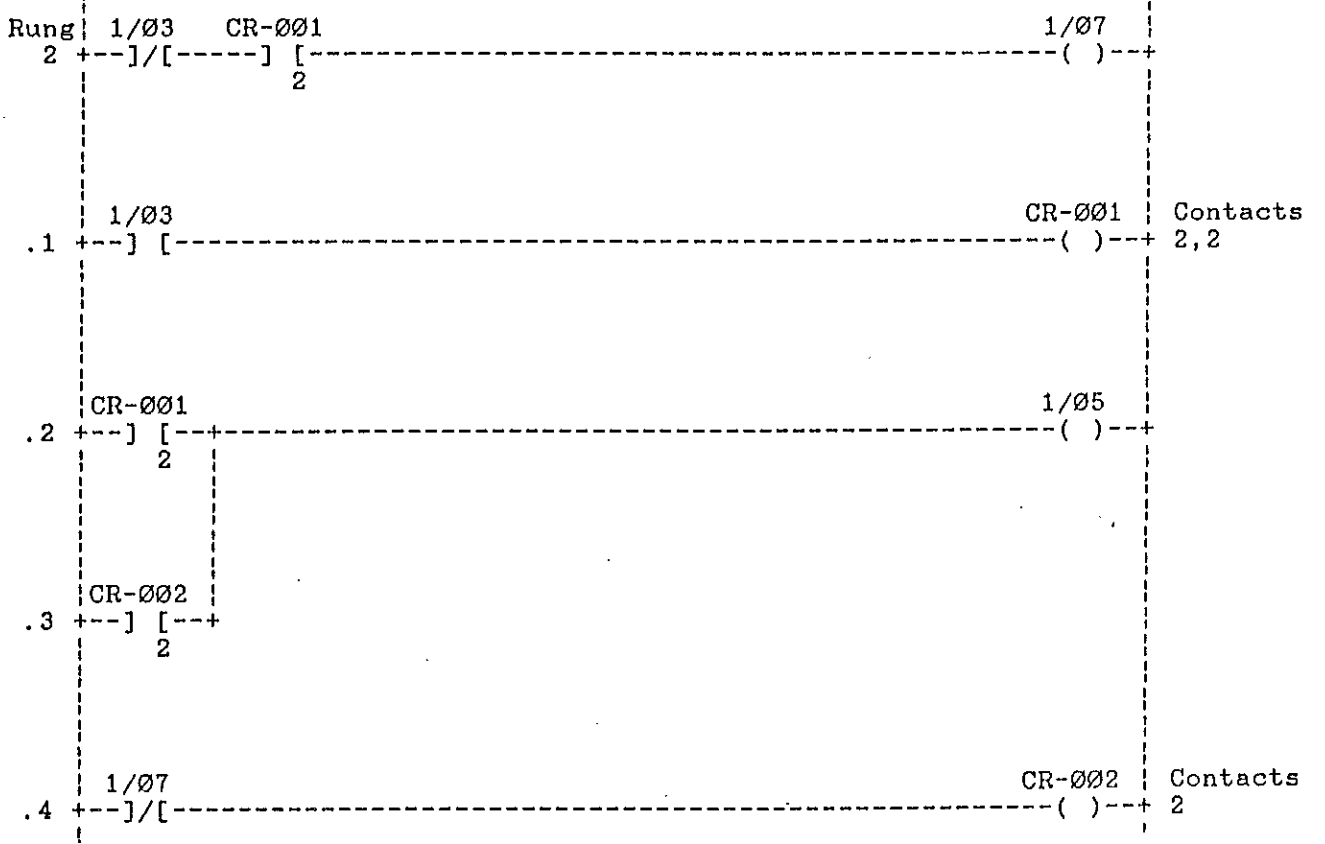
SHEET <u>2</u> OF <u>4</u>	NUMBER 7809-45

BABY BEAR BONES PLUG-IN TIMERS


Divelbiss Advanced Documentation Ladder Diagram Listing

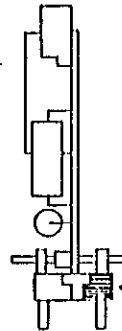
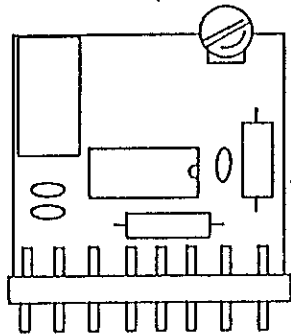
```

{           OFF DELAY TIMER PROGRAM           }
{
{ When input 1/03 is turned on CR-001 energizes which turns on }
{ output 1/05. When input 1/03 is turned off timer 1/07 is    }
{ pulsed for one scan. This pulse causes timer 1/07 to time.  }
{
{ Note that once CR-001 is turned off CR-002 will keep output }
{ 1/05 energized. The contact sense of timer contact 1/07 is  }
{ inverted because of the hardware limitations and space       }
{ requirements.                                               }
{
{ At the end of the time cycle contact 1/07 changes state and }
{ CR-002 turns off as does output 1/05.                       }
}
    
```

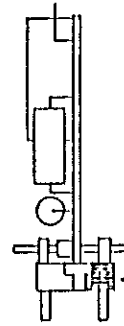
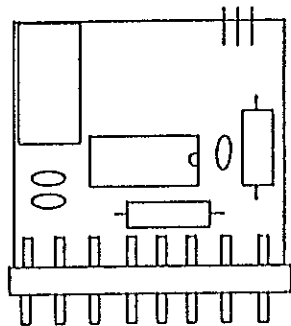


NOTE: The timer in this example is plugged into I/O address 1/07. When the timer is inserted both the output and input are dedicated to the timer

	
SHEET	NUMBER
3 OF 4	7809-45

BABY BEAR BONES PLUG-IN TIMERSICM-TM-05, 07, 09
Local Time Adjustment

Indicates Pin 1
align with Pin 1
on socket.

ICM-TM-06, 08, 10
Remote Time AdjustmentWARNING

The ICM Programmable Controller, as with other solid state controls, must not be used in applications which would be hazardous to personnel in the event of failure of the controller. Precautions must be taken to provide mechanical and/or electrical safeguards external to the controller.

NOTE: Specifications subject to change without notice.

SHEET
4 OF 4NUMBER
7809-45